

S.A.D.L.



DCS: Warthog - A Guide

Contents

# Confirm JTRS On.....	3
# Set Network.....	4
Call-Sign, Own and Group ID.....	5-8
# SPI Display to All.....	9
# SPI Broadcast setup.....	10
<hr/>	
# Create and Transmit Target Assignment.....	11
Flight Lead/Transmission.....	11
Wingman/Reception.....	14
# SPI Broadcast.....	21
# Instant Messaging.....	22

Situational Awareness Datalink

Operational set-up and employment considerations
in a Multiplayer environment.

Confirm JTRS On:

The Joint Tactical Radio Switch, located on the AHCP panel, enables power to the aircraft's Datalink systems



SET NETWORK (Call-Sign, Own and Group ID):

Flight-Lead will designate Group ID and Flight Order. Call-Sign to be abbreviated to 4 digits:

Group ID: Any number between 1-99 chosen by Flight Lead

Own ID: Usually indicative of Flight Seniority, ie Flight lead = 1, Wingman1 = 2 and so on.

Call-Sign: Viper abbreviated to VPR.

Set the TAD as SOI by selecting OSB15 (1) and Navigate to the SADL Network Configuration page via OSB10 (2)



SADL NETWORK CONFIGURATION



Navigate to the CDU and utilize the scratch-pad
to enter the abbreviated 4-digit call-sign.



Select OSB17 to enter call-sign into Network.



Confirm Data-Entry (1).



Navigate to the CDU and utilize the scratch-pad to enter Own-ID.

Select OSB07 to enter Own-ID into Network.



Confirm Data-Entry (1).



Navigate to the CDU and utilize the scratch-pad to enter Group-ID.

Select OSB08 to enter Group-ID into Network.



Confirm Data-Entry (1).



CONFIRM NETWORK SET TO SPI DISPLAY TO ALL

Navigate to OSB1 – Profile settings.

Select OSB16 – CHG SET

Confirm Entry SPI Display = All



CONFIRM SPI BROADCAST SET TO ON

DMS Left Long



Confirm Data-Entry (1).

Operational requirements might dictate that SPI Broadcast be toggled off to aid in Situational Awareness by de-cluttering the TAD.

In such instances Flight Lead will dictate whether Wingmen broadcast, alternatively not.

DMS Left Long toggles SPI Broadcast off.

OPERATIONAL EMPLOYMENT

1. Create and Transmit a Target Assignment.

Flight Lead/Transmission

Flight Lead Identifies, Sorts and Marks target for Wingman with TGP as SOI.



TMS Right Short designates TGP LOS as Markpoint A. Note use of laser range-finder (L L) to enable IFFCC to designate accurate co-ordinates.

Toggle Steer-Point dial on the Auxiliary Avionics Panel to Mark and set TAD as SOI.

Markpoint A will now be the default SPI. Visually confirm with presence of SPI (wedding cake) symbol in TAD where it intersects with the TGP LOS.



- # Slew the TAD Cursor to the Flight Element that you wish to transmit the Target Assignment to.
- # Verify presence of Hook-Line between Ownship and Wingman and Hook Wingman with TMS Fwd Short. Once hooked, visually verify with OSB07 that Wingman Group and Own ID is displayed.



- # Once Flight Lead satisfied that Target can be prosecuted, send Attack-Tasking to Wingman by pressing OSB07.

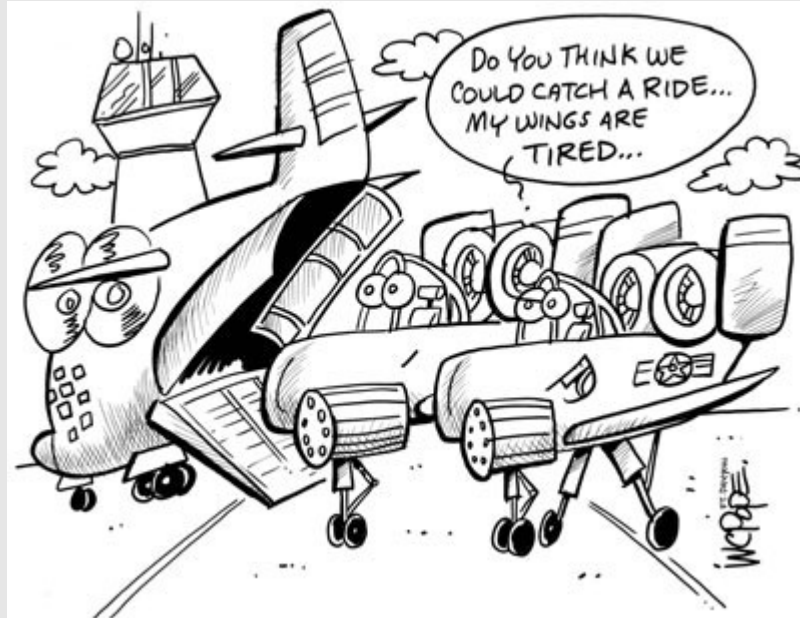
- # Once Attack tasking sent, Flight Lead toggles Steer-Point dial on the Auxiliary Avionics Panel to Flight Plan. SPI reverts to default Steer-Point 1 with Mark-Point A (Target Assignment) at TGP LOS as per TGP Diamond in TAD.



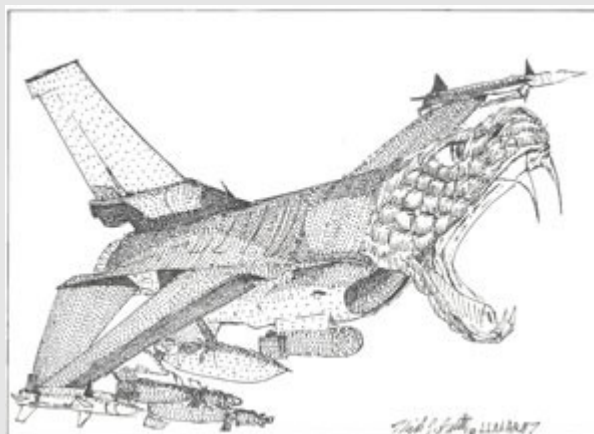
- # For Multiple taskings, repeat procedure as above. Mark-Points stored in IFFCC sequentially from A-Y and capable of being transmitted for tasking accordingly. Navigate between Mark-Points with Steerpoint Rocker switch, alternatively DMS Fwd/Aft with HUD as SOI.

Wingman/Reception

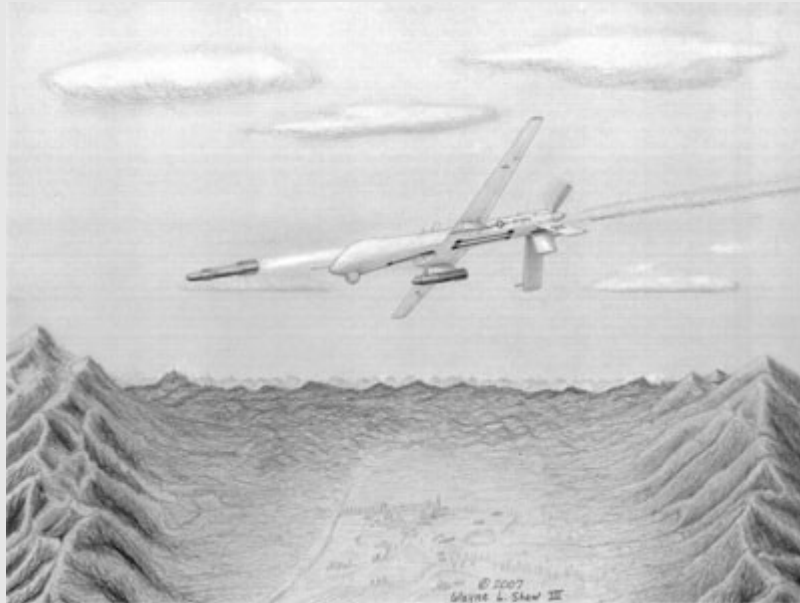
Wingman TAD picture at Ingress to Target Area.



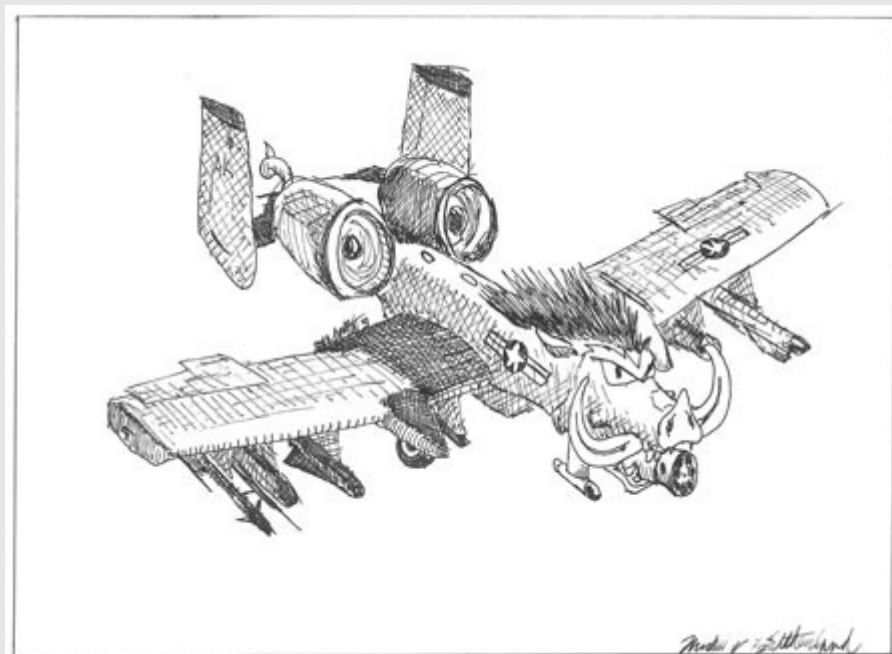
-



- # Wingman selects OSB19 (WILCO) to accept Targeting Assignment. The Assigned Target symbol will now be present in the TAD (red triangle).



- # Slew the TAD Cursor to the Assigned Target Symbol (red triangle).
- # Verify presence of Hook-Line between Ownship and Assigned Target Symbol and Hook Assigned Target Symbol with TMS Fwd Short.



- # With Assigned Target Symbol (red triangle) hooked, set the Assigned Target Symbol as SPI with TMS Fwd Long.
- # Assigned Target Symbol will now be the SPI. Visually confirm with presence of SPI (wedding cake) symbol in TAD where it intersects with the Assigned target Symbol (red triangle).
- # De-Clutter TAD by clearing Target Assignment with OSB07 (CNC).



Confirm Assigned Target Symbol removed.



Set TGP as SOI (OSB15) and slave all sensors to SPI with China Hat Fwd Long to visually confirm Target location and Prosecute.

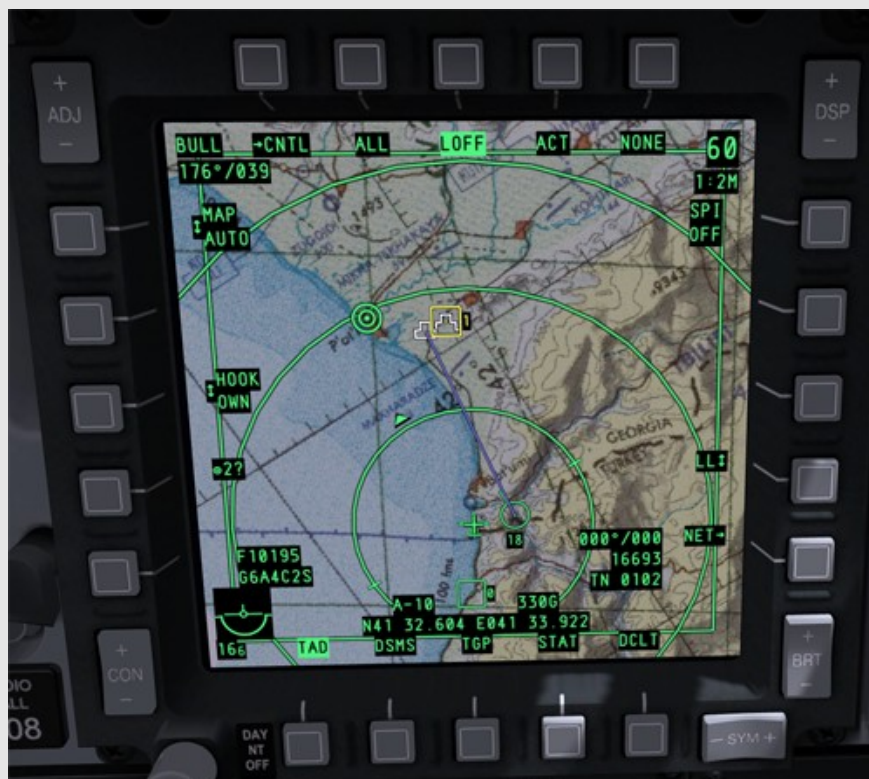


In accordance with the above procedure, multiple Target assignments can be issued dependant on Operational requirements.



2. SPI BROADCAST

- # With SPI Broadcast toggled on (DMS Left Long), the respective Flight elements will always be broadcasting their Sensor Point of Interest.
- # Flight lead will determine whether to toggle broadcasting on or off depending on Operational considerations/to aid in de-cluttering of the TAD to aid in Situational Awareness.
- # Typical TAD picture of SPI-Broadcast as follows:



- # Note Purple line extending from Wingman to Mini-SPI symbol indicative of Wingman SPI.

3. INSTANT MESSAGING

- # Specific instructions from Flight Lead/Other Flight Members relating to the Target Assignment can be sent via IM to the respective Wingman in the case of Operational circumstances dictating Radio Silence or reasons otherwise.

Transmission of Instant Message

- # To send an IM, navigate to the CDU and commence typing the message.



- # Navigate to the Message (MSG) page via OSB11-15 and enter the text from the scratch-pad to the MFCD via OSB06.
- # Scratch-Pad is limited to 24-character line entry with the message page limited to ten lines of text. Enter text until message complete.



- # Passively Hook the intended recipient of the message by slewing the TAD cursor over the SADL Member Network symbol and note the Own/Group ID code (0101).



- # Enter Own/Group code via OSB18 and visually confirm as accords with information received from Passive Hook.
- # Transmit message via OSB17.

Receiving of Instant Message

Incoming message will be indicated by a note in the bottom right of the MFCD's (NEW MSG).



To open message, select OSB17 and Message page will open on Received Messages page.



Delete (OSB03), or reply to SENDER (OSB18) via OSB01. Clear note with TMS Left Short.

....Go

Ugly

Early....